



145 Harle Street Abermain, NSW



Big block, big potential (2 lots under 1 title)

Sitting on an enormous 1,537sqm. block, this property provides exceptional potential to project seekers and developers. Positioned close to Abermain's conveniences and only five minutes from Kurri and the Expressway, the property offers an outstanding opportunity to renovate or rebuild, while its two lots under the one title provides potential for dual occupancy (STCA).

- Expansive level block spanning an impressive 1,537sqm. with farmland at the rear
- Original three-bedroom home at front of the property ready for its next chapter
- As is, home spans single level with soaring ceilings and original appointments

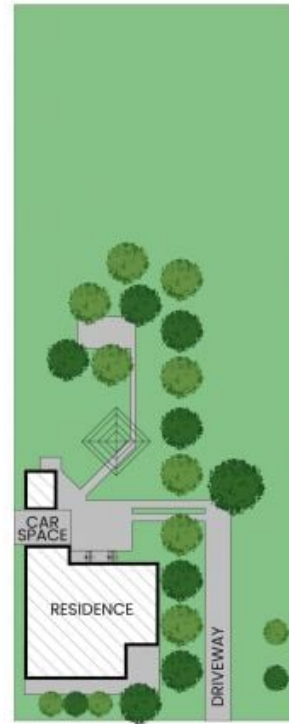
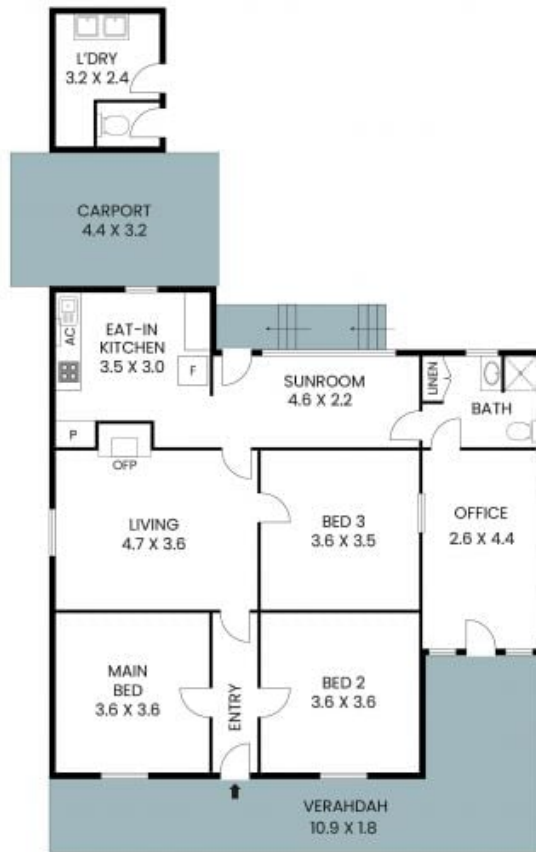
Inspect: Saturday, 2nd May 2026 9:20 - 9:40

Debra Ford

0413 478 655

145 Harle St
Abermain

STONE



The site plan and floor plan are not to scale; measurements are indicative and in metres. Bushes and trees are placed for illustration purposes. Plans should not be relied on. Interested parties should make and rely on their own enquiries. All other information provided has been collected from reliable sources but cannot be guaranteed for accuracy.